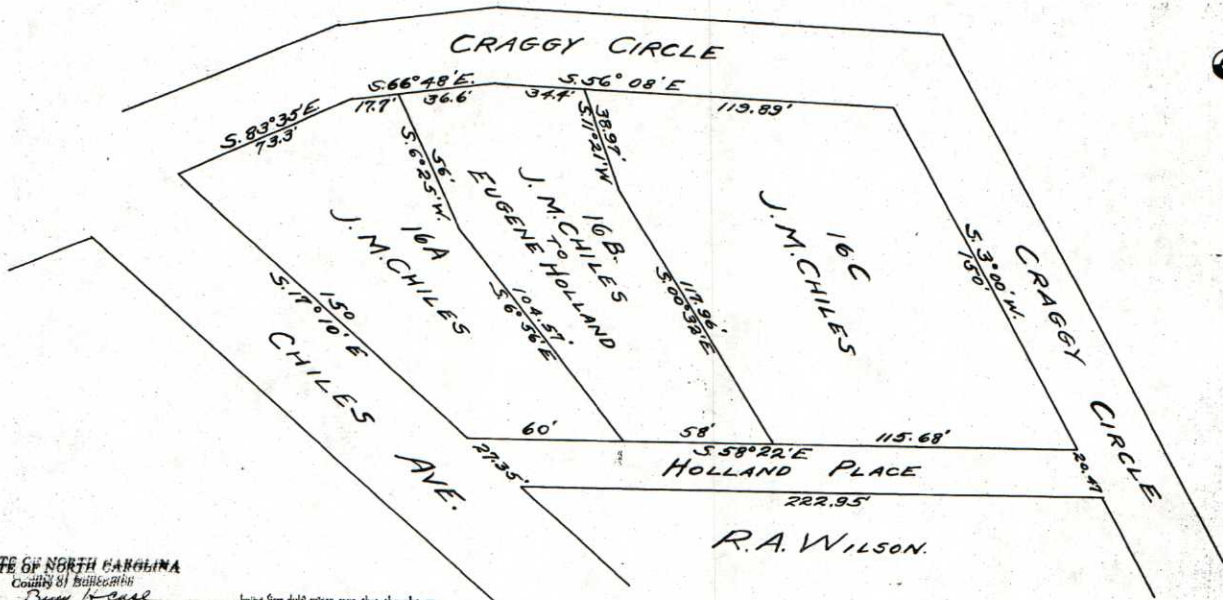


4/34



STATE OF NORTH CAROLINA

County of Buncombe
 Being free and clear, I, Bruce H. Case, being first duly sworn, say that the plat on which this certificate is recorded is in all respects correct and was prepared from an actual survey made by myself during the month of July, 1922, in a vicinity of the Magnetic meridian from the true Meridian of Buncombe County.

I, Bruce H. Case, Clerk Superior Court, Buncombe County, do hereby certify that the above is a true and correct copy of the original as filed in my office on the 14th day of July, 1922, and that upon it is affixed the seal of the State of North Carolina. Let the same with this certificate be registered.

SUBDIVISION
 OF
J.M. CHILES' APPORTIONMENT
LOT 16, 40 ACRE TRACT.
KENILWORTH
 Scale 1"=30ft

Asheville N.C.
June 1922.

B.H. CASE
Reg. Engineer.

NOTE
Please do not mark or write upon this plat.



Buncombe County Map



0 25 50 100 Feet

